

# FS-1020D Specifications

## BASIC SPECIFICATIONS:

Configuration:	Desktop Monochrome Printer with Standard 250 Sheet Drawer plus 50 Sheet Multi-Purpose Tray and Duplex Unit
Resolution:	Fast 1200 dpi (1800 x 600), 600 x 600 dpi, 2400 x 600 dpi (w/KIR)
Printer Memory:	Standard 16MB, upgradable to 272MB via 100 pin DIMMs; Standard CF Card Slot (Type 1)
Electrical Requirements:	120V, 60Hz, 7.1A
Dimensions:	14.9"W x 14.8"D x 9.3"H
Weight:	23.2 lbs
Max Duty Cycle:	25,000 Pages

## CONTROLLER SPECIFICATIONS:

Controller:	PowerPC405 266 MHz
Supported PDL / Emulations:	PRESCRIBE, PCL6 (PCL XL, PCL5e), KPDL3 (PS3), Diablo 630, IBM ProPrinter X24, Epson LQ850, Line Printer
Fonts:	80 Fonts for PCL XL/5e and KPDL3, 1 Bitmap Font
Windows™ OS Compatibility:	Windows™ 95/98/Me/NT4.x/2000/XP
Novell™ OS Compatibility:	Novell Network™ 3.x/4.x/5.x
Mac OS Compatibility:	OS 8.x/9.x/10.x
UNIX OS Compatibility:	Sun OS 4.1.x; Solaris 2.x; AIX; HP-UX (LPR)
Connectivity / Interface:	Standard IEEE 1284 Parallel, Full-Speed USB 2.0.
KUIO LV Expansion Slots (1):	Optional IB-11 Serial Interface; IB-21E 10/100BaseTX Network Interface; IB-22 Enhanced Wireless NIC; IB-20 10Base2, 10/100BaseTX Network Interface
Supported Protocol:	TCP/IP, IPX/SPX, AppleTalk, NetBEUI
Driver:	KX Driver for Windows™, PPD for Mac, PPD for Linux/UNIX
Utilities:	KM-NET Viewer, KM-NET Remote Operation Panel, KM-NET Job Manager, KM-NET Printer Disk Manager, Network Advanced Setup Utilities, PRESCRIBE Utilities

## OUTPUT SPEEDS:

Warm-Up Time:	Less than 15 Seconds
First Print Out:	Less than 10 Seconds
Pages Per Minute:	21 Letter, 10 ipm Duplex

## PAPER SUPPLY:

Standard Paper Sources:	250 Sheet Drawer, 50 Sheet MPT
Drawer Paper Size:	8.5" x 11", 8.5" x 14", A4, B5, A5
MPT Paper Size:	8.5" x 11", 8.5" x 14", A4, B5, A5, Custom (2.8" x 5.8" - 8.5" x 11.7")
Std/Max Paper Capacity:	300 Sheets/560 Sheets
Paper Weight:	16-28 lb Bond via Paper Drawer, 16 lb Bond - 90 lb Index via MPT
Input Materials:	Bond Paper, Recycled Paper, Transparencies, Labels, Envelopes

## DUPLEX UNIT

Paper Size:	8.5" x 11", 8.5" x 14", A4
Paper Weight:	16 - 28 lb Bond

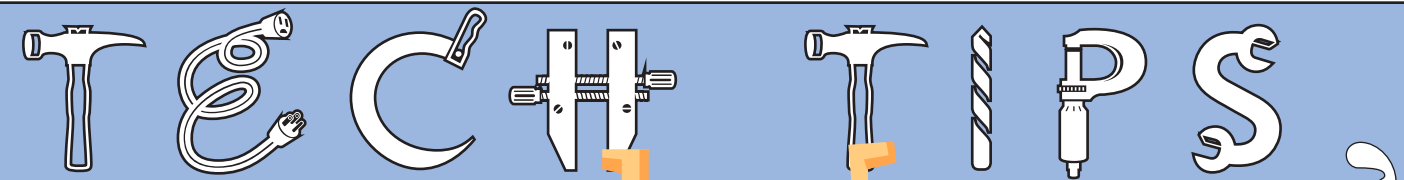
## PAPER HANDLING OPTIONS:

### PAPER DRAWER: PF-17

Paper Capacity:	250 Sheets
Max. Drawers:	1
Paper Weight:	16 - 28 lb Bond
Paper Size:	8.5" x 11", 8.5" x 14", A4, B5, A5
Dimensions / Weight:	14.9"W x 14.7"D x 3.1"H/4.8 lbs

## CONSUMABLES:

TK-18:	7,200 pages @ 5% Coverage
	* Ships with 3,600 pages @ 5% Coverage



## Kyocera/Copystar Platform Compatibility



SAP was founded in 1972, and is the recognized leader in providing collaborative business solutions for all types of industries and for every major market. SAP is used by over 12 Million Users Worldwide, and is the world's largest inter-enterprise software company. SAP's core product, the "mySAP Business Suite" is an open and flexible platform, and supports virtually all databases, applications, operating systems and hardware. Kyocera's Multifunctional and Printer products and our unique PRESCRIBE command language allows for SAP device type printing in SAP environments.



The Citrix MetaFrame suite offers applications designed to secure, streamline and simplify resource deployment across the network. Citrix is utilized in a majority of Fortune 1000 Companies, with a focus on the Financial Service, Government, Healthcare, Education, Manufacturing and Telecommunications Vertical Markets. Kyocera is a Premier Business Alliance Partner of Citrix with our Multifunctional and Printer products, and we offer a choice of Print Drivers for the Citrix MetaFrame environment.



Apple's Macintosh, launched in 1984, offers an alternative to the PC-driven world, and was the first system to utilize a graphic interface versus a DOS command-based system. Mac Environments offer an intuitive architecture, as well as advanced software and hardware, and counts a growing number of converts,

## Did you know?

Chester F. Carlson was the inventor of Xerography in 1938. It was not until 1959, however, that the first convenient office copier using xerography was unveiled.



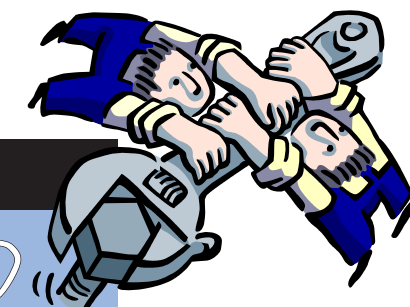
looking for a "better digital life". Kyocera Multifunctional and Printer products offer a standard PostScript emulation (KPDL), and a full compliment of PPDs for the Mac User.



Novell and it's core product, NetWare are Server-based Operating Systems, used in a vast majority of Fortune 500 companies. Novell NetWare offers IT a secure and stable platform for all network services. Kyocera is a Novell YES Certified Test Lab and our Multifunctional and Printer products fit seamlessly in all Novell environments.



Microsoft Windows offers a full compliment of Server-based utilities and software to simplify Network Management and ensure security and reliability. Kyocera Multifunctional and Printer products support all versions of Microsoft Windows from Windows 95 to Server 2003. Kyocera's unique KX Driver has set a new benchmark, with regards to ease of use and simplicity, for the document solutions industry.



source:www.kmaconnect.com

## PROBLEM SOLVED

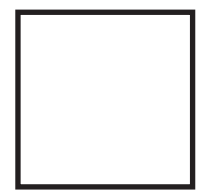
&  
Progressive Office Systems  
are

- Jim Harrington**  
Owner & Digital Imaging Sales
  
- Rue Ann Harrington**  
Owner & Supplies Sales
  
- Johnnie Laas**  
Customer Service,  
Service & Supplies
  
- David White**  
Service Manager
  
- John Sigler**  
Technician
  
- Stacy Gurley**  
Customer Service & Deliveries
  
- Travis Swenson**  
IT Systems Manager  
& Publications Editor

September						
SUNDAY	MONDAY	TUESDAY	WEDNESDAY	THURSDAY	FRIDAY	SATURDAY
			1	2	3	4
5	Closed for Labor Day	6	7	8	9	10
11	12	13	14	15	16	17
18	19	20	21	22	23	24
25	26	27	28	29	30	
	Meters Faxed Out			Meters Due		

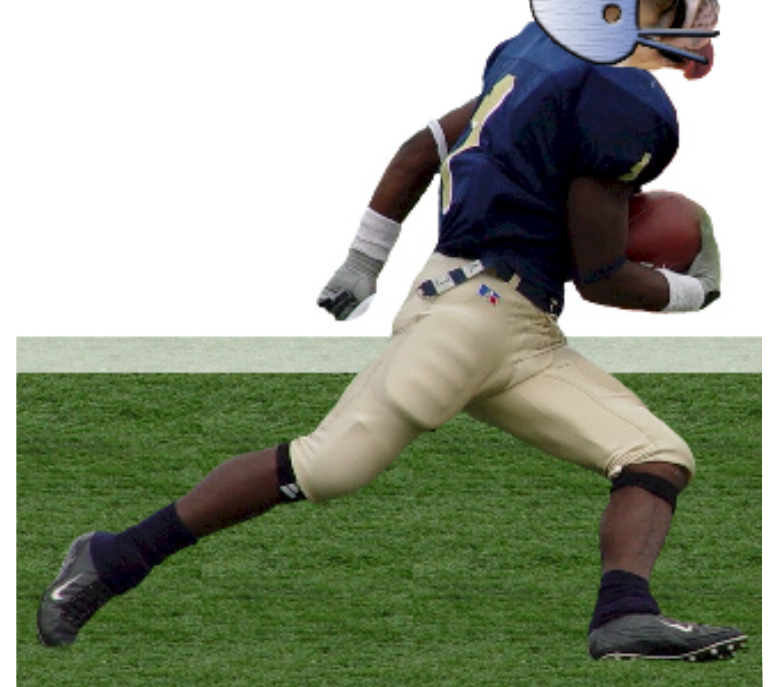
Progressive Office Systems  
109 East Seventh Street  
Georgetown, Texas 78626

phone 512.863.4029 | 800.880.3299  
fax 512.863.3956  
web www.progressive-online.com



# Office Network News

The official newsletter of Progressive Office Systems Inc. September 2004



Millie says... "Progressive Office Systems and Copystar, always a winning combination."

## The small, affordable and durable FS-1020D

**Fairfield, New Jersey** 405 266 MHz CPU with 16MB of Standard Memory. Memory is expandable by adding One 256MB DIMM for a total of up to 272MB of Memory.

The new Kyocera FS-1020D is an upgraded Version of the FS-1010 utilizing the same accessories with the addition of standard duplex capabilities.

The FS-1020D is a 21 page per minute, fast 1200 resolution, Black/White Laser Printer and offers a 15,000 page-per-month maximum duty cycle. The Print Controller incorporates a Power PC

The FS-1020D can be set up as a Parallel, Serial, USB or Optional Network Printer and will support Windows 3.1 / 95 / 98 / ME / NT4 / 2000 / XP, and Mac Operating Systems. KPDL 3 (Postscript Level 3 Emulation) with 136 Outline Fonts is standard.

source:www.kmaconnect.com

**GO!** EAGLES HIPPOS LIONS COUGARS BUFFS TIGERS BULLDOGS

**In this issue...**

- Small, Affordable and Durable . . . . . 1
- Millie's Crossword Puzzle . . . . . 1
- Featured Machine FS 1020D . . . . . 2
- Platform Compatibility . . . . . 3
- Did you know? . . . . . 3

Check out page two for a picture and detailed information about the FS-1020D

**NEW! Millie's crossword puzzle**

C	S	G	H	J	I	L	N	P	G	H	J	8	Y	H
G	O	U	N	M	G	6	J	R	T	N	V	T	E	C
D	U	P	L	E	X	W	D	E	B	G	F	R	C	V
S	D	D	Y	S	S	R	D	S	L	E	B	A	N	E
Y	Y	M	S	S	C	B	R	C	A	N	W	N	E	T
U	R	F	M	D	T	S	F	R	B	V	N	S	R	T
S	F	S	R	E	S	A	L	I	L	E	W	P	A	F
K	Y	O	C	E	R	A	R	B	E	L	E	A	P	D
F	T	N	O	M	V	S	C	E	S	O	K	R	S	S
E	V	I	S	S	E	R	G	O	R	P	D	E	N	X
R	M	O	N	O	C	H	R	O	M	E	S	N	A	C
1	2	0	0	D	P	I	C	S	F	S	E	C	R	R
S	D	C	T	S	E	H	B	U	N	K	R	I	T	G
N	I	N	E	T	Y	P	O	U	N	D	T	E	X	T
4	E	N	F	W	X	T	D	0	2	0	1	S	F	E

Copystar Laser Prescribe Labels  
Kyocera Monochrome Ninety Pound Text  
FS 1020D Duplex Envelopes  
Progressive 1200 Dpi Transparencies